

# Witte Software

## Modbus Poll User manual

Modbus Master Simulator

February 2017

Modbus Poll version 7.1

Copyright: Witte Software, 2002 -2017

<http://www.modbustools.com>

## Table of content

1	Modbus Poll.....	5
1.1	Supported Windows versions.....	5
2	Modbus Poll Features.....	6
2.1	Connections.....	6
2.2	Supported Modbus Functions.....	6
2.3	Data logging.....	6
2.4	Display formats.....	6
2.5	Miscellaneous features.....	6
3	Overview.....	7
3.1	Help from anywhere.....	7
3.2	Alias cells.....	7
3.3	Value cells.....	8
3.4	Change font.....	8
3.5	Conditional colors.....	9
3.5.1	Color example.....	9
3.6	Open a new window.....	10
4	Connection dialog.....	11
4.1	Connection.....	11
4.2	Serial Settings.....	12
4.3	Mode.....	12
4.4	Response timeout.....	12
4.5	Min delay between polls.....	12
4.6	Remote Server.....	12
4.7	Advanced settings.....	12
4.7.1	RTS Toggle.....	12
4.7.2	DSR.....	12
4.7.3	CTS.....	13
4.7.4	DTR.....	13
4.7.5	Remove Echo.....	13
5	Read/Write definition.....	14
5.1	Slave ID.....	14
5.2	Function code.....	14
5.2.1	Read functions.....	14
5.2.2	Write functions.....	15
5.3	Address.....	15
5.3.1	Protocol/message address.....	15
5.3.2	Device address.....	15
5.3.3	5 digits vs. 6 digits addressing.....	15
5.4	Address examples.....	15
5.4.1	Read Holding Registers.....	15
5.4.2	Read Discrete Inputs.....	16
5.5	Scan rate.....	16
5.6	Read/Write Disabled.....	16
5.6.1	Disable on error.....	16
5.7	Hide alias columns.....	16
5.8	Address in cell.....	16
5.9	PLC Addresses (Base 1).....	17
5.10	Enron/Daniel Mode.....	17
5.11	Rows.....	17
6	Display formats.....	18
6.1	Native Modbus registers.....	18

6.2	32 bit long	18
6.3	32 bit floating	18
6.4	64 bit double	18
7	Save/Open Workspace	19
8	Test center	20
8.1	ASCII Example	20
8.2	TCP/IP Example	20
8.3	Test center string file	20
8.3.1	Content of a string list	20
8.4	Copy	20
9	Modbus Data logging	21
9.1	Text file	21
9.1.1	Log Rate	21
9.1.2	Delimiters	21
9.1.3	Log if data changed only	21
9.1.4	Log Errors	21
9.1.5	Log Date	22
9.1.6	Log ms	22
9.1.7	Log address	22
9.1.8	Start Log when ok is pressed	22
9.1.9	Start Log when *mbp is opened	22
9.1.10	Flush to file immediately	22
9.1.11	Append	22
9.2	Microsoft Excel	23
9.2.1	Log Rate	23
9.2.2	Header information	23
10	Communication traffic	25
11	OLE/Automation	26
11.1	Excel example	26
11.1.1	Excel 2007	26
11.1.2	Excel 2010	26
11.1.3	Excel sample code	27
11.2	Connection Functions/Properties	28
11.2.1	Connection	28
11.2.2	BaudRate	28
11.2.3	DataBits	28
11.2.4	Parity	29
11.2.5	StopBits	29
11.2.6	SerialPort	29
11.2.7	ResponseTimeout	29
11.2.8	ServerPort	29
11.2.9	ConnectTimeout	30
11.2.10	IPVersion	30
11.2.11	OpenConnection	30
11.2.12	CloseConnection	31
11.3	Read Functions	32
11.3.1	ReadCoils	32
11.3.2	ReadDiscretelInputs	32
11.3.3	HoldingRegisters	32
11.3.4	InputRegisters	33
11.3.5	ShowWindow	33
11.3.6	Byte order	33

11.3.7	ReadResult.....	34
11.3.8	WriteResult.....	34
11.4	Automation data properties.....	35
11.4.1	Coil.....	35
11.4.2	Signed Register.....	35
11.4.3	Unsigned Register.....	35
11.4.4	Long.....	36
11.4.5	Float.....	36
11.4.6	Double.....	36
11.5	Automation Write Functions.....	37
11.5.1	WriteSingleCoil.....	37
11.5.2	WriteSingleRegister.....	37
11.5.3	WriteMultipleCoils.....	37
11.5.4	WriteMultipleRegisters.....	38
12	Exception and error messages.....	39
12.1	Modbus Exceptions.....	39
12.2	Modbus Poll error messages.....	40

# 1 Modbus Poll

Modbus Poll is an easy to use Modbus master simulator developed for many purposes. Among others:

- Designers of Modbus slave devices for quick and easy testing of protocol interface
- Automation engineers that need to test Modbus devices or networks on site
- Service engineers that want to read out and/or change specific service data from a device
- Change Modbus registers in a slave device
- Log data from Modbus devices
- Troubleshooting and compliance testing

## 1.1 Supported Windows versions

All windows versions from Windows XP to windows 10 are supported.

## 2 Modbus Poll Features

### 2.1 Connections

Modbus Poll read/write data from devices using:

- Modbus RTU or ASCII on RS232 or RS485 networks. (USB/RS232/485 Converter)
- Modbus TCP/IP
- Modbus Over TCP/IP. (Modbus RTU/ASCII encapsulated in a TCP packet)
- Modbus UDP/IP
- Modbus over UDP/IP. (Modbus RTU/ASCII encapsulated in a UDP packet)

### 2.2 Supported Modbus Functions

- 01: Read coils
- 02: Read discrete inputs
- 03: Read holding registers
- 04: Read input registers
- 05: Write single coil
- 06: Write single register
- 15: Write multiple coils
- 16: Write multiple registers
- 17: Report slave ID
- 22: Mask write register
- 23: Read/Write registers

### 2.3 Data logging

- Log data to a text file
- Log data direct into Excel

### 2.4 Display formats

Each cell can be individual formatted.

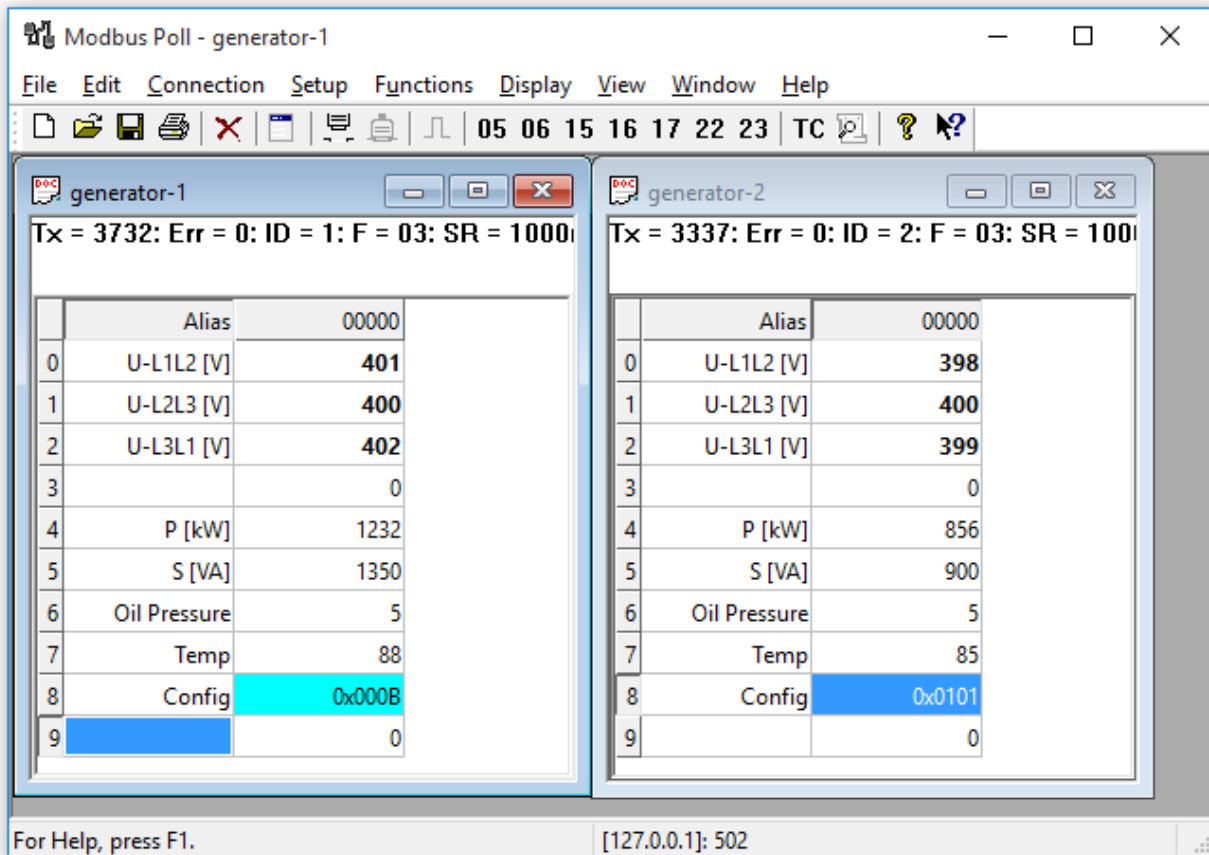
- Signed 16 bit register
- Unsigned 16 bit register
- Hex
- Binary
- 32 bit long with any word/byte order
- 32 bit float with any word/byte order
- 64 bit double float with any word/byte order

### 2.5 Miscellaneous features

- OLE/Automation for interfacing with Excel VB etc.
- Monitoring of data traffic
- Print and print preview
- Font selection
- Conditional colors

### 3 Overview

Modbus Poll uses a multiple document interface. That means several windows can be opened. Each one with different data contents from different slave devices at the same time.



This picture shows two open windows. One reading 10 Holding registers from address 4000 (44001) and another reading 10 Holding registers from address 2000 (42001).

#### 3.1 Help from anywhere

**Press F1** and get context sensitive help on a topic associated with the current selected item.  
**SHIFT + F1** invokes a special "help mode" in which the cursor turns into a help cursor (arrow + question mark). The user can then select a visible object in the user interface, such as a menu item, toolbar button, or window. This opens help on a topic that describes the selected item.

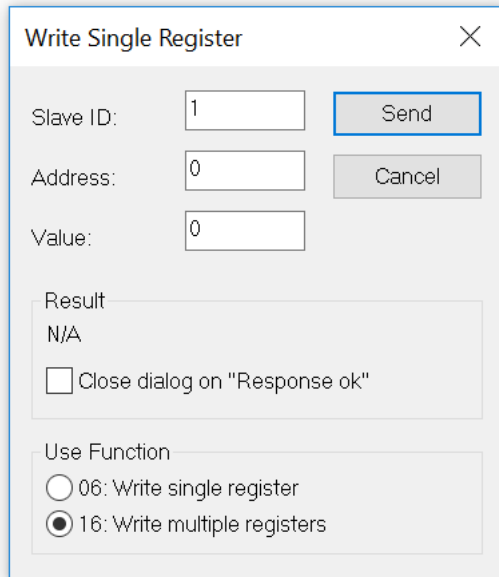
#### 3.2 Alias cells

Here you can type any text for designation of the value cells. You can also copy/paste text from Excel cells.

### 3.3 Value cells

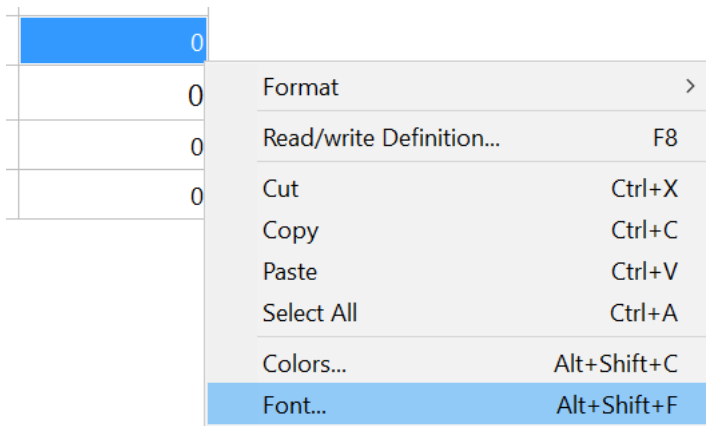
Show the data values of the Modbus registers. If you double click a value cell a dialog box lets you write a new value to the slave device. Typing a number in a value cell shows the dialog as well. It is possible to select the used Modbus function used to write the value.

The check box "Close dialog on Response ok" is used to automatically close the dialog box when a value is successfully sent. This is convenient when a lot of values are to be changed. In that way it is fast to select a new cell and then type a new value again.



### 3.4 Change font

Select the cells to be changed and then right click. Or from the menu select display and then font.





### 3.5 Conditional colors

Conditional colors help you visually show values in specific ranges.

There are 3 color options:

- Default color: This color is used if none of the conditional colors evaluates to true.
- Rule 1: This color selection is used if the expression evaluates to true.
- Rule 2: This color selection is used if the expression evaluates to true. Rule 2 has precedence over rule 1.

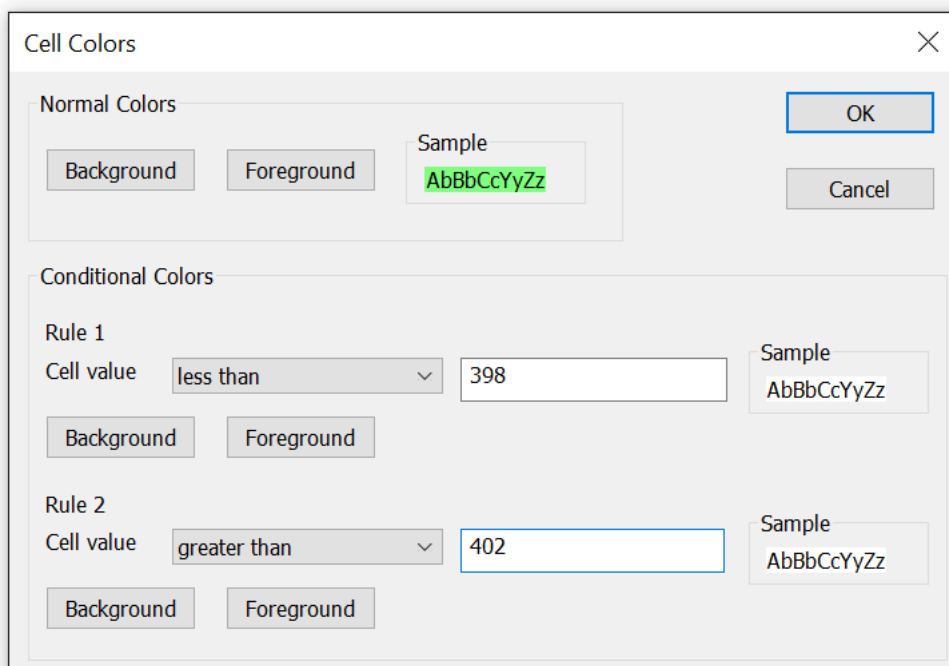
There are 7 different comparison operators:

- not used
- equal to
- greater than
- less than
- greater than or equal to
- less than or equal to
- and

The “and” operator cannot be used when the data type is of float or 32bit long type. The condition value is entered as a hex number if “and” is selected. It evaluates to true if any of the bit in both the cell and the condition value is 1.


#### 3.5.1 Color example

Green color if the cell value is between 398 and 402



### 3.6 Open a new window

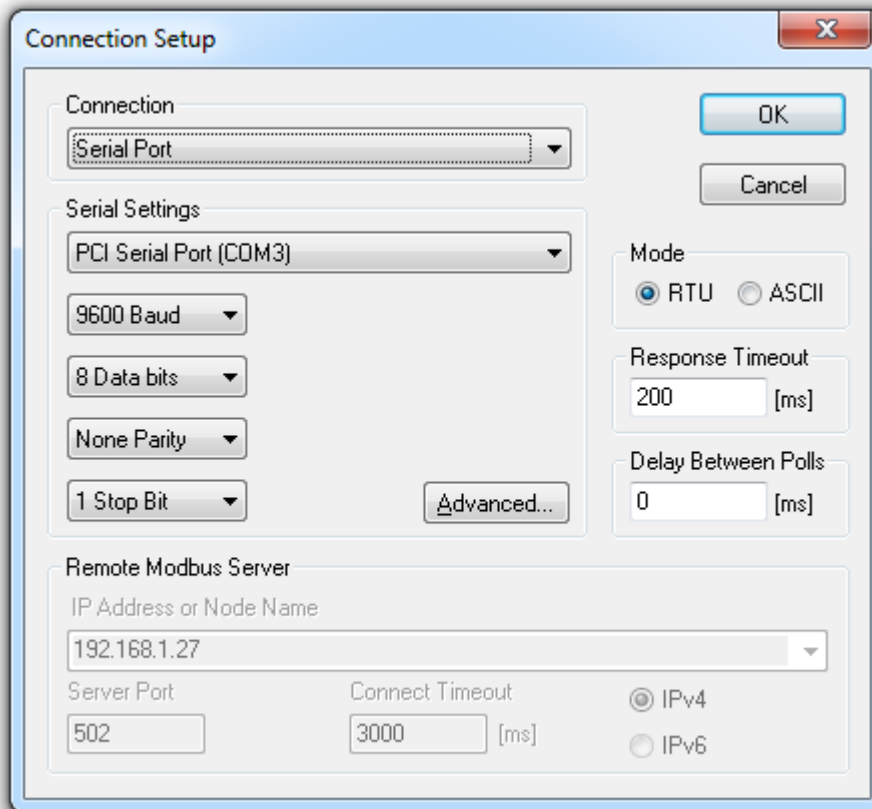
To open another window you have 3 options:

- Press CTRL+N
- Select new in the file menu
- Press  on the tool bar

## 4 Connection dialog

To open the connection dialog you have 2 options:

- Press F3
- Select connect from the connection menu



### 4.1 Connection

There are 5 different connection types:

1. **Serial:**  
Modbus over serial line. RS232 or RS485. A USB serial converter can be used.
2. **Modbus TCP/IP:**  
Select TCP/IP if you want to communicate with a MODBUS TCP/IP network. In this case, slave ID is the same as the Unit ID used in MODBUS TCP/IP.  
The port number is default 502.  
If the connection fails then try if you can ping your device at the command prompt. If the ping command fails then Modbus Poll fails too.
3. **Modbus UDP/IP:**  
Select UDP/IP if you want to communicate with a MODBUS UDP/IP network. This is the same as Modbus TCP/IP but the connection less UDP protocol is used instead.
4. **Modbus RTU/ASCII over TCP/IP:**  
This is a RTU or ASCII message send over a TCP/IP network instead of serial lines.
5. **Modbus RTU/ASCII over UDP/IP:**  
This is a RTU or ASCII message send over a UDP/IP network instead of serial lines.

**Note:** Connection type 3-5 is not standard Modbus as specified by [www.modbus.org](http://www.modbus.org) but they are added for convenience.

Depending on your selection some other settings will be grayed.

## 4.2 Serial Settings

Use these parameters to set serial port settings. They are only available if connection type is “**Serial Port**”.

## 4.3 Mode

Use this option to select RTU or ASCII mode. Default RTU.

## 4.4 Response timeout

Response timeout specifies the length of time that Modbus Poll should wait for a response from a slave device before giving up. Default is 1000ms.

## 4.5 Min delay between polls

This setting ensures a minimum delay until next request is transmitted no matter of the scan rate. The resolution of this setting is approximately 15ms. It's possible on some computers to obtain better resolution but not all.

Important: If you set this value lower than 20ms the 3.5 char time gap between response and a new request can't be guaranteed. This is because the Windows scheduler switch tasks every 10 - 20ms.

1. If you Polls several slaves in a serial RS485 network you should NOT set the value lower than 20ms. This is to ensure the 3.5 char time gap.
2. In a TCP/IP network less than 20ms is ok.
3. Serial connection to only one slave device less than 20ms is ok.

## 4.6 Remote Server

Remote server settings are only available when use an Ethernet connection.

- **IP Address:** Servers IP address. Default is local host 127.0.0.1
- **Port:** Server port number. Default 502
- **Connect Timeout:** Max time to use to establish a connection. Default 1000

## 4.7 Advanced settings

### 4.7.1 RTS Toggle

RTS Toggle specifies that the RTS line will be high if bytes are available for transmission. After all buffered bytes have been sent, the RTS line will be low.

You can use this to switch direction if you have a 232/485 converter without automatic direction switch.

**Warning:**

The use of RTS controlled RS232/RS485 converters should be avoided if possible. It is difficult to determine the exact time when to switch off the transmitter with non real-time operating systems like Windows and Linux. If it is switched off too early characters might still sit in the FIFO or the transmit register of the UART and these characters will be lost. Hence the slave will not recognize the message. On the other hand if it is switched off too late then the slave's message is corrupted and the master will not recognize the message.

### 4.7.2 DSR

DSR specify whether the DSR (data-set-ready) signal is monitored for output flow control. If this member is TRUE and DSR is turned off, output is suspended until DSR is sent again.

### **4.7.3 CTS**

CTS specify whether the CTS (clear-to-send) signal is monitored for output flow control. If this checkbox is enabled and CTS is turned off, output is suspended until CTS is sent again.

### **4.7.4 DTR**

DTR specifies whether the DTR will be enabled or disabled whenever the port is opened.


### **4.7.5 Remove Echo**

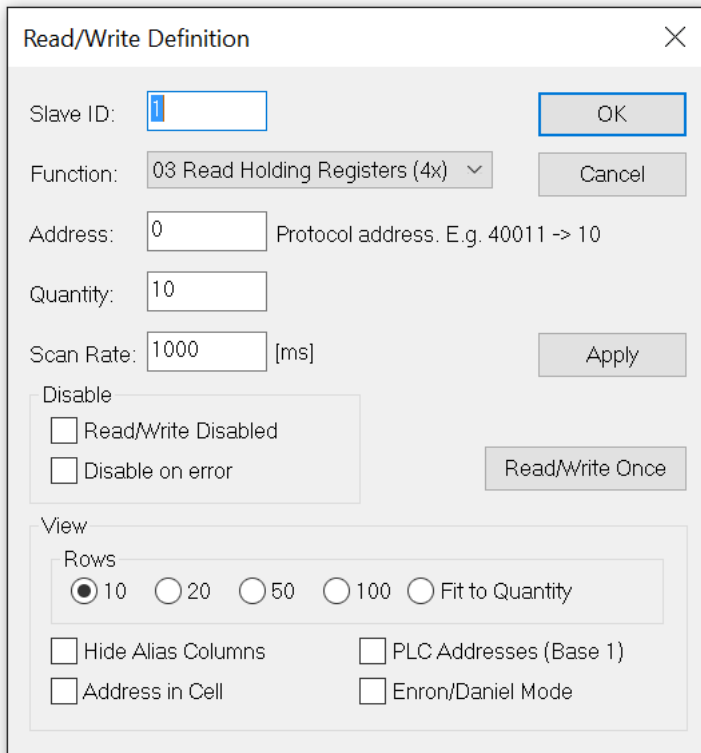
If your device or RS232/RS485 converter echoes the chars just sent.

## 5 Read/Write definition

Use this command to define the data to be monitored for the active window.

To open the Read/Write Definition dialog you have 3 options:

- Press F8
- Select “Read/Write Definition” from the Setup menu
- Press  on the tool bar



### 5.1 Slave ID

Range 1 to 255. (MODBUS protocol specifications say 247). The value 0 is also accepted to communicate directly to a MODBUS/TCP or MODBUS/UDP device.

### 5.2 Function code

You can select 1 of 8 function codes.

#### 5.2.1 Read functions

The data returned by the read functions are displayed on the grid window.

- 01: Read coils (0x)
- 02: Read discrete inputs (1x)
- 03: Read holding registers (4x)
- 04: Read input registers (3x)

## 5.2.2 Write functions

The write functions write the data displayed on the grid window.

- 05: Write single coil (Writes to Coil status)
- 06: Write single register (Writes to Holding registers)
- 15: Write multiple coils (Writes to Coils)
- 16: Write multiple registers (Writes to Holding registers)

## 5.3 Address

Addresses in the Modbus protocol are confusing! Some protocol specifications use the protocol/message address and others use device addressing.

### 5.3.1 Protocol/message address

Some protocol specifications use the protocol/message address counting from 0 to 65535 along with a function code. This is also what the new Modbus specifications use. This is the address inside the message sent on the wire.

Modbus Poll use protocol/message address counting from 0 to 65535.

### 5.3.2 Device address

Some protocol specifications use device address/registers. Registers counts from 1. The first digit describes the function to be used. That means the device address 40101 is identified by address 100. The “4” means Holding registers and 4x registers counts from 1. And even more confusing: 4x means function code 03 and 3x means function code 04!

### 5.3.3 5 digits vs. 6 digits addressing

The address format 4x counts from 40001 to 49999. The next address is **not** 50000. In old days 9999 addresses was enough. There are cases where 9999 is not enough. Then a zero is added. 40101 become 400101 and so on. This is called 6 digits addressing or extended addressing.

This is not a problem with Modbus Poll. 410001 become 10000. The “4” is thrown away and the rest 10001 is decremented by 1 as we count from 0 instead of 1.

## 5.4 Address examples

These examples show how to setup Modbus Poll if a specification use device addresses.

### 5.4.1 Read Holding Registers

You want to read 20 registers from device address 40011 from slave ID 2 every 1000ms. From the “4” we know this is function 03 “Read Holding Registers”.

- Slave ID = 2
- Function = “03 Read Holding Registers (4x)”
- Address = 10 (11 minus 1)
- Quantity = 20
- Scan rate = 1000

## 5.4.2 Read Discrete Inputs

You want to read 1000 coils from address 110201 from slave ID 5 every 500ms. From the “1” we know this is function 02 “Read Discrete Inputs”

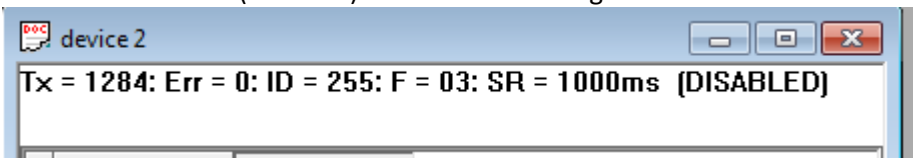
- Slave ID = 5
- Function = “02 Read Discrete Inputs (1x)”
- Address = 10200 (10201 - 1)
- Quantity = 1000
- Scan rate = 500

## 5.5 Scan rate

The scan rate can be set from 0 to 3600000ms. Note that setting the scan rate lower than the transaction time does not make sense. If a serial connection at 9600baud is used and 125 registers are requested the transaction time is roughly  $8 + 2 + 250 + 2 = 262\text{ms}$  + the gap (>3.5 char time) between the request and the response. In this case setting the scan rate at e.g. 100ms do not make sense as the transaction time is at least  $262\text{ms} + \text{delay in the slave (gap)} + \text{min time between polls}$ . (Set in the connection dialog).

## 5.6 Read/Write Disabled

The ‘Read/Write Disabled’ check box can be used to temporary enable or disable the communication for this window. A text (Disabled) is then shown along with the Tx and Error counters.



If 'Read/Write' is disabled you can make single requests with the ‘Read/Write Once’ button or press F6.



### 5.6.1 Disable on error

The ‘Disable on error’ check box is used to disable Read/Write in case of error.

## 5.7 Hide alias columns

The ‘Hide Alias Columns’ is used to hide all alias columns. This is convenient to make more space if they are not used.

## 5.8 Address in cell

If enabled, the address is also shown in the value cell like: 2000 = 00000

	Alias	02000
0		2000 = 000000
1	<b>Temp. 1</b>	2001 = 000000
2	Temp. 2	2002 = 000000
3		2003 = 000000



## 5.9 PLC Addresses (Base 1)

This option will show the addresses as device address.

	Alias	4x2000
1		42001 = 000000
2	<b>Temp. 1</b>	42002 = 000000
3	Temp. 2	42003 = 000000
4		42004 = 000000

## 5.10 Enron/Daniel Mode

Enron or Enron/Daniels Modbus is Standard Modbus with a few "Vendor Extensions". The exact impact of these extensions is context dependent, but most common Modbus commands works as expected. There are some custom vendor-defined functions available - but few users expect or use them. The largest impact has to do with how 32-bit data values are read/written.

Enron-Modbus defines two special 4x holding register ranges:

- 4x5001 to 4x5999 are assumed 32-bit long integers (4-bytes per register).
- 4x7001 to 4x7999 are assumed 32-bit floating points (4-bytes per register).

Dealing with 32-bit values in Modbus is NOT unique to Enron-MB. However, Enron-MB takes the debatable step of returning 4-bytes per register instead of the 2-bytes implied by the term "holding register" in the Modbus specification. This means a poll of registers 4x5001 and 4x5002 in Enron-Modbus returns 8-bytes or two 32-bit integers, whereas Standard Modbus would only return 4-bytes or one 32-bit integer treated as two 16-bit integers. In addition, polling register 4x5010 in Enron-MB returns the tenth 32-bit long integer, whereas Standard Modbus would consider this 1/2 of the fifth 32-bit long integer in this range.

## 5.11 Rows

Specify the number of rows in the grid you prefer.

## 6 Display formats

Mark the cells to be formatted. Select one of the 16 display formats from the display menu.

### 6.1 Native Modbus registers

The 16 bit Modbus registers can be displayed in 4 different modes.

- Signed.
- Unsigned.
- Hex.
- Binary.

### 6.2 32 bit long

This combines 2 16bit Modbus registers. It can be displayed in 4 different word/byte orders.

- Long AB CD
- Long CD AB
- Long BA DC
- Long DC BA

#### Example:

Byte Order: **AB CD**

The decimal number 123456789 or in hexadecimal 07 5B CD 15

Order as they come over the wire in a Modbus message: 07 5B CD 15

### 6.3 32 bit floating

This combines 2 16bit Modbus registers. It can be displayed in 4 different word/byte orders.

- Float AB CD
- Float CD AB
- Float BA DC
- Float DC BA

#### Example:

Byte Order: **AB CD**

The floating point number 123456.00 or in hexadecimal 47 F1 20 00

Order as they come over the wire in a Modbus message: 47 F1 20 00

### 6.4 64 bit double

This combines 4 16bit Modbus registers. It can be displayed in 4 different word/byte orders.

- Double AB CD EF GH
- Double GH EF CD AB
- Double BA DC FE HG
- Double HG FE DC BA

#### Example:

Byte Order: **AB CD EF GH**

The floating point number 123456789.00 or in hexadecimal 41 9D 6F 34 54 00 00 00

Order as they come over the wire in a Modbus message: 41 9D 6F 34 54 00 00 00

## 7 Save/Open Workspace

If you open many related Modbus windows it is convenient to save a snapshot of the current layout of all open and arranged Modbus Windows in one workspace.

A workspace (\*.mbw) is a file that contains display information and file names of all open windows. Not the actual contents. To do this, go to File-> Save Workspace.

When you open a workspace file, Modbus Poll opens all Modbus Windows and displays them in the layout that you saved.

## 8 Test center

The purpose of this test dialog is to help MODBUS slave device developers to test the device with any string of their own composition.

The list box displays the transmitted data as well as the received data.

You can have several test strings in the pull down list box. When you have entered a string then press the "Add to List" button then the string is added to the list.

The selected string is sent when the "Send" button is pressed.

With the "Save list" button you can store the strings in a text file.

Check the "Add Check" check box if you want to add a CRC or LRC to the end of the input string.

When using the test center you may want to disable communication from other windows. Check the "Read/Write disable" check box in "Read/Write Definition" dialog. Setup->Read/Write Definition.

### 8.1 ASCII Example

String in the combo box:

**3A 30 31 30 33 30 30 30 30 30 30 41**

The transmitted string if LRC is added

**3A 30 31 30 33 30 30 30 30 30 30 41 46 32 0D 0A**

A CR LF pair are also added.

### 8.2 TCP/IP Example

Read 10 holding registers.

**00 00 00 00 00 06 01 03 00 00 00 0A**

The first 6 bytes are the TCP/IP header.

### 8.3 Test center string file

With a text editor such as notepad or similar you can prepare strings to be used in the test.

The first line in the file must be the string 'Test Center'. This is how Modbus Poll knows that the file is the correct format. Press "Open list" to open the prepared text file.

#### 8.3.1 Content of a string list

Modbus Poll

3A 30 31 30 33 30 30 30 30 30 30 30 41

3A 30 32 30 33 30 30 30 30 30 30 30 41

3A 30 33 30 33 30 30 30 30 30 30 30 41

### 8.4 Copy

Use the Copy button to copy selected Tx/Rx strings to the clipboard.

The SHIFT and CTRL keys can be used together with the mouse to select and deselect strings, select groups of strings, and select non-adjacent strings.

#### Hint:

Leave this window open while doing other commands.

## 9 Modbus Data logging

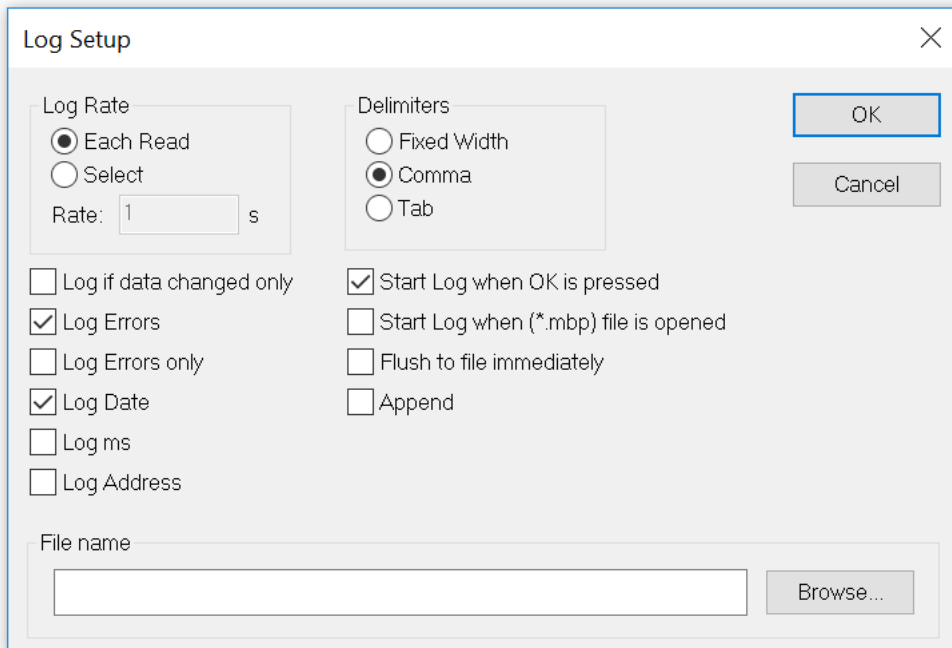
You can log data to either a text file or direct to Microsoft Excel.

### 9.1 Text file

Select Log from the setup menu or use short cut keys: Alt+L

Each Modbus Window logs to its individual text file.

When you want to stop the data logging then select the logging off command on the setup menu.



#### 9.1.1 Log Rate

- **Each read:** Write a log line for all Modbus requests. Log frequency as scan rate.
- **Select:** Specify the log rate in seconds. Independent of scan rate.

**Remark:** If the scan rate is e.g. 10000ms it makes no sense to set a 1 sec log rate as data are logged only when new data are ready.

#### 9.1.2 Delimiters

As delimiter you can use one of following options:

- **Fixed width:** Means that the values are organized in columns.
- **Comma:** Values separated by a comma.
- **Tab:** Values separated by a tab.

#### 9.1.3 Log if data changed only

Specify that a new log line is written only if any data is changed since last log.

#### 9.1.4 Log Errors

Specify that errors such a timeout etc. are logged.

### 9.1.5 Log Date

Specify that the current date is added to the log time.

### 9.1.6 Log ms

Specify that milliseconds are added to the log time.

### 9.1.7 Log address

Specify that the Modbus Address is added to the log.

### 9.1.8 Start Log when ok is pressed

Specify that logging is started when ok button is pressed. Otherwise the log setup is just stored when \*.mbp file is saved.

### 9.1.9 Start Log when \*.mbp is opened

Specify that logging is automatically started when a \*.mbp file is opened.

### 9.1.10 Flush to file immediately

This ensures that log lines are not cashed in the file system but physical written immediately.

### 9.1.11 Append

Specify that logs are appended to selected file. Otherwise a new file is created.

#### Example of a text file with fixed width:

22:28:13	<40001>	17395	0	0	0	0	0	0	0	0
22:28:14	<40001>	17396	1	0	0	0	0	0	0	0
22:28:15	<40001>	17394	1	0	0	2	55	0	0	0
22:28:16	<40001>	13350	1	0	0	4	0	0	0	0

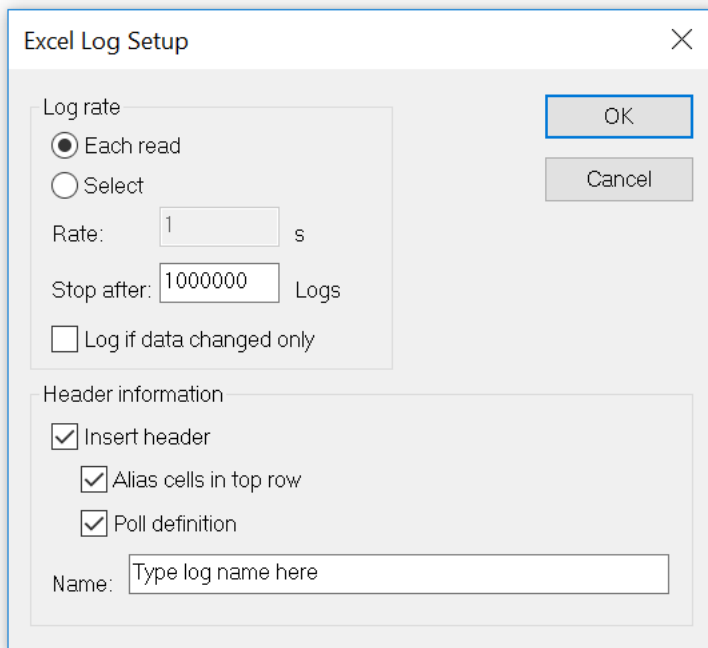
You can import the data in an Excel spreadsheet.

## 9.2 Microsoft Excel

This feature requires that Microsoft Excel is installed. Excel 2003 log is limited to 65535 logs as this is the max number of rows in an Excel sheet. Excel 2007 or newer is limited to 1,048,576 rows. Each Modbus Window logs to its individual Excel sheet.

Select Excel Log from the setup menu or use short cut keys: Alt+X

**Do not touch the Excel sheet while logging as this will interrupt the logging.**



### 9.2.1 Log Rate

- **Each read:** Write a log line for all Modbus requests. Log frequency as scan rate.
- **Select:** Specify the log rate in seconds. Log is independent of scan rate.  
**Remark:** If the scan rate is e.g. 10000ms it makes no sense to set a 1 sec log rate as data are logged only when new data are ready.
- **Stop after:** Specify the number of log lines. Note that Excel 2003 is limited to 65,536 rows and Excel 2007 1,048,576 rows.

### 9.2.2 Header information

- **Insert header:** Information is inserted in the top most 3 lines in the Excel sheet.
  - **Alias cells in top row:** Insert alias names in row 3.
  - **Poll definition:** Insert ID, Function etc. in row 2.
  - **Name:** Insert a log name in row 1.

	A	B	C	D
1	Plant log			
2	Poll definition: ID = 1, Function = 03, Address = 0, ScanRate = 1000			
3		Power	Level 1	Temp
4	01/29/12 22:33:45:471	232	77	41
5	01/29/12 22:33:46:753	234	79	43
6	01/29/12 22:33:47:768	235	80	44
7	01/29/12 22:33:48:784	236	81	45
8	01/29/12 22:33:49:799	237	82	46
9	01/29/12 22:33:50:815	238	83	47
10	01/29/12 22:33:51:831	239	84	48
11	01/29/12 22:33:52:846	240	85	49
12				

Excel log with header information.



## 10 Communication traffic

Select the menu Display->Communication to show the traffic on the serial line or Ethernet cable. Use the stop button to temporary stop the update for inspection.

Use the copy button to copy selected line to the clipboard.

**Note:**

This window show only data sent and received by Modbus Poll. You can't use it as a data sniffer.

**Hint:**

Leave this window open while doing other commands.

## 11 OLE/Automation

Automation (formerly known as OLE Automation) makes it possible for one application to manipulate objects implemented in another application.

An Automation client is an application that can manipulate exposed objects belonging to another application. This is also called an Automation controller.

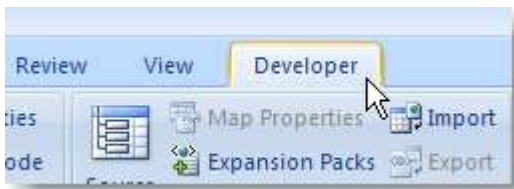
An Automation server is an application that exposes programmable objects to other applications. **Modbus Poll** is an automation server.


That means you can use any program that supports Automation such as Visual Basic, Excel etc. to interpret and show the MODBUS data according to your specific requirements.

### 11.1 Excel example

You should display the Developer tab or run in developer mode when you want to write macros.

#### 11.1.1 Excel 2007



1. Click the Microsoft office button  and then click Excel options.
2. Click popular and then select the show Developers tab in the ribbon check box.  
Note the ribbon is part of the Microsoft fluent user interface.

#### 11.1.2 Excel 2010

1. Click on the file tab.
2. Click options. Excel Options window will open.
3. On the left pane click Customize Ribbon.
4. On the right pane, under Main Tabs, check the Developer check box.
3. Click OK. The Developer tab should now show in the ribbon (right most tab).

### 11.1.3 Excel sample code

This example opens two windows. One reading registers and another reading Coils.

Modbus Poll is hidden but you can show it by uncomment the "ShowWindow" line. This will show one of the windows.

An example is also included with the Modbus Poll installation.

Start -> All Programs -> Modbus Poll -> Examples

```
Public doc1 As Object
Public doc2 As Object
Public app As Object
Dim res As Integer
Dim n As Integer

Private Sub StartModbusPoll_Click()
    Set app = CreateObject("Mbpoll.Application")
    Set doc1 = CreateObject("Mbpoll.Document")
    Set doc2 = CreateObject("Mbpoll.Document")

    ' Read 10 Holding Registers every 1000ms
    res = doc1.ReadHoldingRegisters(1, 0, 10, 1000)
    ' Read 10 Coil Status every 1000ms
    res = doc2.ReadCoils(1, 0, 10, 1000)
    ' doc1.ShowWindow()

    app.Connection = 1 ' Modbus TCP/IP
    app.IPAddress = "127.0.0.1" ' local host
    app.ServerPort = 502
    app.ConnectTimeout = 1000
    res = app.OpenConnection()

End Sub

Private Sub Read_Click()
    Cells(5, 7) = doc1.ReadResult() 'Show results for the requests
    Cells(6, 7) = doc2.ReadResult()

    For n = 0 To 9
        Cells(5 + n, 2) = doc1.SRegisters(n)
    Next n

    For n = 0 To 9
        Cells(18 + n, 2) = doc2.Coils(n)
    Next n

End Sub
```

## 11.2 Connection Functions/Properties

The following properties and functions do the same as you setup in the connection dialog (F3).

### 11.2.1 Connection

Connection selects the desired connection. A serial port or one of the Ethernet connections can be selected.

Property **Connection** as Integer

Valid values:

0	Serial port
1	Modbus TCP/IP
2	Modbus UDP/IP
3	Modbus ASCII/RTU over TCP/IP
4	Modbus ASCII/RTU over UDP/IP

### 11.2.2 BaudRate

Applicable only for Connection = 0

Property **BaudRate** as Long

Valid values:

300  
600  
1200  
2400  
4800  
9600  
14400  
19200  
38400  
56000  
57600  
115200  
128000  
256000

Default value = 9600

**Example:**

BaudRate = 9600

### 11.2.3 DataBits

Applicable only for Connection = 0

Property **DataBits** as Integer

Valid values:

7  
8

Default value = 8

**Example:**

DataBits = 8

### 11.2.4 Parity

Applicable only for Connection = 0

Property **Parity** as Integer

Valid values:

0 = None

1 = Odd

2 = Even

Default value = 2

**Example:**

Parity = 2

### 11.2.5 StopBits

Applicable only for Connection = 0

Property **StopBits** as Integer

Valid values:

1

2

Default value = 1

**Example:**

StopBits = 1

### 11.2.6 SerialPort

Applicable only for Connection = 0

Property **SerialPort** as Integer

Valid values:

1...255

Default value = 1

**Example:**

SerialPort = 1

### 11.2.7 ResponseTimeout

The ResponseTimeout specifies the length of time in ms that Modbus Poll should wait for a response from a slave device before giving up.

Property **ResponseTimeout** as Integer

Valid values:

50...100000

Default value = 1000

**Example:**

ResponseTimeout = 1000

### 11.2.8 ServerPort

Applicable only for Connection = 1...4

Property **ServerPort** as Long

Valid values:

0...65535

Default value = 502

**Example:**

ServerPort = 502

## 11.2.9 ConnectTimeout

The ConnectTimeout specifies the length of time that Modbus Poll should wait for a TCP/IP connection to succeed.

Applicable only for Connection = 1...4

Property **ConnectTimeout** as Integer

Valid values:

100...30000ms

Default value = 1000ms

**Example:**

ConnectTimeout = 1000

## 11.2.10 IPVersion

Applicable only for Connection = 1...4

Property **IPVersion** as Integer

Valid values:

4 IP Version 4

6 IP Version 6

Default value = 4

**Example:**

IPVersion = 4

## 11.2.11 OpenConnection

Opens the connection selected with the Connection property.

Function **OpenConnection()** As Integer

**Return Value:**

For error 3-5: Please check if you have the latest serial port driver.

0 = SUCCESS

1 = Serial Port not available

3 = Serial port. Not possible to get current settings from port driver.

4 = Serial port. Serial port driver did not accept port settings.

5 = Serial port. Serial port driver did not accept timeout settings.

12 = TCP/UDP Connection failed. WSA start up

13 = TCP/UDP Connection failed. Connect error

14 = TCP/UDP Connection failed. Timeout

15 = TCP/UDP Connection failed. IOCTL

17 = TCP/UDP Connection failed. Socket error

21 = TCP/UDP Connection failed. Address information

**Example how to open a Modbus TCP/IP connection:**

```
Public app As Object
Dim res As Integer
Set app = CreateObject("Mbpoll.Application")
app.Connection = 1 ' Select Modbus TCP/IP
app.IPVersion = 4
app.IPAddress = "192.168.1.27"
app.ServerPort = 502
app.ConnectTimeout = 1000
app.ResponseTimeout = 1000
res = OpenConnection()
```

**Example how to setup a serial connection:**

```
Public app As Object
Dim status As Integer
` Create an object to Modbus Poll
Set app = CreateObject("Mbpoll.Application")

app.Connection = 0           ` Mode is serial port
app.SerialPort = 1          ` Com port 1
app.BaudRate = 9600         ` 9600 baud
app.Parity = 0              ` None parity
app.Mode = 0                ` RTU mode
app.ResponseTimeout = 1000  ` Wait 1000ms until give up
status = app.OpenConnection()
```

**11.2.12 CloseConnection**

Function **CloseConnection()** As Integer

**Return Value**

Zero if success. Nonzero value if failed.

## 11.3 Read Functions

The following functions do the same as you setup in the read/write definition dialog (F3). Read functions are associated with a Modbus Poll document. (The window with data)

### Example:

First a Modbus Poll document is needed.

```
Public doc As Object
Set doc = CreateObject("Mbpoll.Document")
res = doc.ReadCoils(1, 0, 100, 1000) ` Read 100 coils every 1000ms
```

### Remarks:

You must create a Read before you can use properties to get data.

### 11.3.1 ReadCoils

Function **ReadCoils**(SlaveID As Integer, Address As Long, Quantity As Integer, ScanRate As Long) As Integer

#### Return Value

True if success. False if not success

#### Parameters

SlaveID,      The slave address 1 to 255  
Address,       The data address (Base 0)  
Quantity,      The number of data. 1 to 2000  
ScanRate,      0 to 3600000ms

### 11.3.2 ReadDiscreteInputs

Function **ReadDiscreteInputs**(SlaveID As Integer, Address As Long, Quantity As Integer, ScanRate As Long) As Integer

#### Return Value

True if success. False if not success

#### Parameters

SlaveID,      The slave address 1 to 255  
Address,       The data address (Base 0)  
Quantity,      The number of data. 1 to 2000  
ScanRate,      0 to 3600000ms

### 11.3.3 HoldingRegisters

Function **ReadHoldingRegisters**(SlaveID As Integer, Address As Long, Quantity As Integer, ScanRate As Long) As Integer

#### Return Value

True if success. False if not success

#### Parameters

SlaveID,      The slave address 1 to 255 (247 is max according to MODBUS specification)  
Address,       The data address (Base 0)  
Quantity,      The number of data. 1 to 125  
ScanRate,      0 to 3600000ms



### 11.3.4 InputRegisters

Function **ReadInputRegisters**(SlaveID As Integer, Address As Long, Quantity As Integer, ScanRate As Long)  
As Integer

**Return Value**

True if success. False if not success

**Parameters**

SlaveID,       The slave address 1 to 255  
Address,       The data address (Base 0)  
Quantity,       The number of data. 1 to 125  
ScanRate,       0 to 3600000ms

### 11.3.5 ShowWindow

**ShowWindow()**

As default Modbus document windows are hidden. The ShowWindow function makes Modbus Poll visible and show the document with data content.

### 11.3.6 Byte order

Property **ByteOrder** As Integer

**Description**

Sets the byte order used by Longs, Floats and Doubles properties.

0 = AB CD (Default)

1 = CD AB

2 = BA DC

3 = DC BA

**Example for Longs:**

Byte Order: AB CD

The decimal number 123456789 or in hexadecimal 07 5B CD 15

Order as they come over the wire in a Modbus message: 07 5B CD 15

**Syntax**

**ByteOrder** [=newvalue]

### 11.3.7 ReadResult

Use this property to check if communication established with Read is running successful.  
Property **ReadResult** As Integer

**Return Value:**

- 0 = SUCCESS
- 1 = TIMEOUT ERROR
- 2 = CRC ERROR
- 3 = RESPONSE ERROR (The response was not the expected slave id, function or address)
- 4 = WRITE ERROR
- 5 = READ ERROR
- 6 = PORTNOTOPEN ERROR
- 10 = DATA UNINITIALIZED
- 11 = INSUFFICIENT BYTES RECEIVED
- 81h = ILLEGAL FUNCTION
- 82h = ILLEGAL DATA ADDRESS
- 83h = ILLEGAL DATA VALUE
- 84h = FAILURE IN ASSOCIATED DEVICE
- 85h = ACKNOWLEDGE
- 86h = BUSY, REJECTED MESSAGE
- 87h = NAK-NEGATIVE ACKNOWLEDGMENT

### 11.3.8 WriteResult

Return a write result as an integer.

Use this function to check if a write was successful. The value is DATA\_UNINITIALIZED until the result from the slave is available. See **ReadResult** for a list of possible values.

Property **WriteResult** As Integer

## 11.4 Automation data properties

The below properties are used to set or get values in the internal write/read arrays in Modbus Poll. The Index used is not a Modbus Address. The Index always counts from 0 no matter of the address used. The data properties are associated with a Modbus Poll document. (The window with data)

### Example 1:

doc is assumed created first. See Excel example.

```
doc.SRegisters(0) = 1
doc.SRegisters(1) = 10
doc.SRegisters(2) = 1234
```

```
`Write 3 registers stored in Modbus Poll internal array
`to Modbus address 100 (40101)
res = doc.WriteMultipleRegisters(1, 100, 3)
```

### Example 2 with floating point values:

```
doc.Floats(0) = 1.3
doc.Floats(2) = 10.5
doc.Floats(4) = 1234.12
res = doc. WriteMultipleRegisters(1, 0, 6) `Write the 6 register stored in Modbus Poll
6 Registers are written as float is 32 bit wide.
```

### 11.4.1 Coil

Property **Coils**(Index As Integer) As Integer

#### Description

Sets a coil in the write array structure or return a coil from the read array

#### Syntax

**Coils**(Index) [=newvalue]

### 11.4.2 Signed Register

Property **SRegisters**(Index As Integer) As Integer

#### Description

Sets a register in the write array structure or return a register from the read array.

#### Syntax

**SRegisters** (Index) [=newvalue]

### 11.4.3 Unsigned Register

Property **URegisters**(Index As Integer) As Long

#### Description

Sets a register in the write array structure or return a register from the read array.

#### Syntax

Object. **URegisters** (Index) [=newvalue]

## 11.4.4 Long

Property **Longs**(Index As Integer) As Long

### **Description**

Sets a long in the write array structure or return a long from the read array.

### **Syntax**

**Longs** (Index) [=newvalue]

## 11.4.5 Float

Property **Floats**(Index As Integer) As Single

### **Description**

Sets a float in the write array structure or return a float from the read array.

### **Syntax**

**Floats** (Index) [=newvalue]

## 11.4.6 Double

Property **Doubles**(Index As Integer) As Double

### **Description**

Sets a double in the write array structure or return a double from the read array.

### **Syntax**

**Doubles** (Index) [=newvalue]

## 11.5 Automation Write Functions

The write functions write the values stored in the array filled by the properties. The functions are associated with a Modbus Poll document. (The window with data)

### 11.5.1 WriteSingleCoil

Function **WriteSingleCoil**(SlaveID As Integer, Address As Long) As Integer

#### Return Value

True if write array is ready and the data are sent. False if array empty or error in parameters. The controlling application is responsible for verifying the write operation by reading back the value written.

#### Parameters

*SlaveID*, The slave address 0 to 255

*Address*, The data address (Base 0)

#### Description

Writes the first coil stored in the write array.

Function 05 is used.

### 11.5.2 WriteSingleRegister

Function **WriteSingleRegister** (SlaveID As Integer, Address As Long) As Integer

#### Return Value

True if write array is ready and the data are sent. False if array empty or error in parameters. The controlling application is responsible for verifying the write operation by reading back the value written.

#### Parameters

*SlaveID*, The slave address 0 to 255

*Address*, The data address (Base 0)

#### Description

Writes the first register stored in the write array.

Function 06 is used.

### 11.5.3 WriteMultipleCoils

Function **WriteMultipleCoils**(SlaveID As Integer, Address As Long, Quantity As Integer) As Integer

#### Return Value

True if write array is ready and the data are sent. False if array empty or error in parameters. The controlling application is responsible for verifying the write operation by reading back the values written.

#### Parameters

*SlaveID*, The slave address 0 to 255

*Address*, The data address (Base 0)

*Quantity*, The number of data. 1 to 1968

#### Description

Write the coils stored in the write array.

Function 15 is used.

## 11.5.4 WriteMultipleRegisters

Function **WriteMultipleRegisters**(SlaveID As Integer, Address As Long, Quantity As Integer) As Integer

### Return Value

True if write array is ready and the data are sent. False if array empty or error in parameters.

The controlling application is responsible for verifying the write operation by reading back the value written.

### Parameters

*SlaveID*, The slave address 0 to 255

*Address*, The data address (Base 0)

*Quantity*, The number of data. 1 to 123

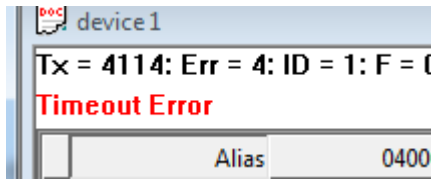
### Description

Write the registers stored in the write array.

Function 16 is used.

## 12 Exception and error messages

Modbus Exceptions and error messages are display in red text in 2<sup>nd</sup> line in each window.



### 12.1 Modbus Exceptions

Modbus exceptions are errors returned from the slave device.

Illegal Function	The function code received in the query is not an allowable action for the server (or slave). This may be because the function code is only applicable to newer devices, and was not implemented in the unit selected. It could also indicate that the server (or slave) is in the wrong state to process a request of this type, for example because it is not configured and is being asked to return register values.
Illegal Data Address	The data address received in the query is not an allowable address for the server (or slave). More specifically, the combination of reference number and transfer length is invalid. For a controller with 100 registers, a request with offset 96 and length 4 would succeed, a request with offset 96 and length 5 will generate exception 02.
Illegal Data Value	A value contained in the query data field is not an allowable value for server (or slave). This indicates a fault in the structure of the remainder of a complex request, such as that the implied length is incorrect. It specifically does NOT mean that a data item submitted for storage in a register has a value outside the expectation of the application program, since the MODBUS protocol is unaware of the significance of any particular value of any particular register.
Slave Device Failure	An unrecoverable error occurred while the server (or slave) was attempting to perform the requested action.
Acknowledge	Specialized use in conjunction with programming commands. The server (or slave) has accepted the request and is processing it, but a long duration of time will be required to do so. This response is returned to prevent a timeout error from occurring in the client (or master). The client (or master) can next issue a Poll Program Complete message to determine if processing is completed.
Slave Device Busy	Specialized use in conjunction with programming commands. The server (or slave) is engaged in processing a long-duration program command. The client (or master) should retransmit the message later when the server (or slave) is free.

## 12.2 Modbus Poll error messages

Timeout error	The response is not received within the expected time.
Response Error	The response is not the expected one. Different slave ID.
CRC Error	The CRC value of the received response is not correct.
Write Error	<p>This is an error reported by the serial driver. This could happen if a USB/RS232/485 converter is used and the USB cable is unplugged. There are 4 types:</p> <ul style="list-style-type: none"><li>- Break condition</li><li>- I/O error</li><li>- Serial connection error</li><li>- Output buffer overflow</li></ul> <p>Write error using TCP/IP connection is normally caused by lost connection.</p>
Read Error	<p>This is an error reported by the serial driver. There are 6 types:</p> <ul style="list-style-type: none"><li>- Framing error</li><li>- Character buffer overrun</li><li>- Parity error</li><li>- Input buffer overflow</li><li>- I/O error</li><li>- Break condition</li></ul> <p>Read error using TCP/IP connection is normally caused by lost connection.</p>
Insufficient bytes received	The response is not the expected length.
Byte count error	The byte count in the response is not correct. Compared to the expected.